



FROM THE FRONT DESK

N.L. elementary students busy as bees

by Chelsea Foley

Agriculture in the Classroom Newfoundland and Labrador (AITC-NL) hosted its "Bee Creative" literary contest for kindergarten to Grade 6 classes across the province in April. The contest was offered in partnership with the Newfoundland and Labrador Beekeeping Association (NLBKA) and the Egg Farmers of Newfoundland and Labrador.

AITC-NL continues to celebrate the release of its digitally animated storybook *Blossom's Big Job*. Blossom was brought to life with the help of the NLBKA. NLBKA member Kim Wiseman narrated the story and NLBKA member Catherine Dempsey voiced the character of the Queen. Students Gabrielle Tucker and Adia Chaplin voiced the characters of Blossom and Daisy.

Those who want to see the animated storybook can find it on the AITC-NL

YouTube channel.

To enter the contest, kindergarten to Grade 6 classes submitted as many as three literary works that combined the students' literary talent with their knowledge of agriculture in Newfoundland and Labrador. Submissions included poems, comics, stories, and more. The contest ran April 12-30.

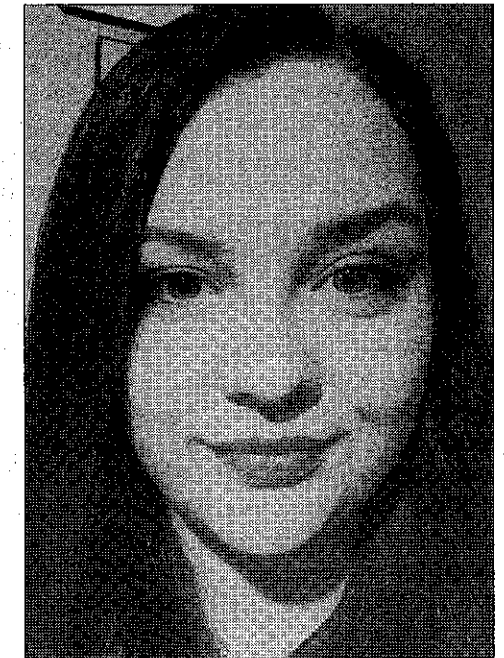
This year, thanks to the NLBKA, 16 winning classes received beehives to decorate. The winning classes could decorate their beehive however they chose. Some designs included school mascots and school colours. Each decorated beehive was then returned to the participating beekeeper's farm where it's being taken care of in the name of the school/class. Hive updates are provided by AITC-NL and NLBKA.

The 16 winning classes were: Ms. R. Whalen's and Ms. D. Whalen's at Carbonear Academy, Mme. Penney's at Elizabeth Park

Elementary, Mr. Foley's at Larkhall Academy, Ms. Finn's at Topsail Elementary, Ms. Harnum's and Ms. Howell's at Tricon Elementary, Ms. Hookey's at Catalina Elementary, Ms. Howlett's and Ms. Vatcher's at Macdonald Drive Elementary, Ms. Murrin's at East Point Elementary, Ms. Bishop's at St. Matthew's School, Ms. Meehan's at Mary Queen of the World Elementary, Ms. Oickle's at Brian Peckford Primary, Ms. Reilly's at St. Catherine's Academy, and Ms. Nadeau's at Bayside Academy.

Agriculture in the Classroom Newfoundland and Labrador thanks all the classes that participated and congratulates the students on their amazing artistic talent displayed on the beehives!

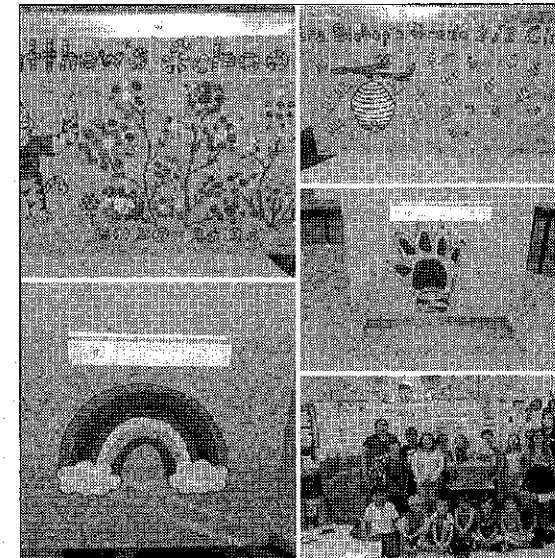
(Chelsea Foley is the Newfoundland and Labrador Federation of Agriculture's Agriculture in the Classroom coordinator.)



Chelsea Foley



Mme. Penney's class at Elizabeth Park Elementary in Paradise, N.L., with their decorated beehive. (Contributed photos)



A collage from the winning class at St. Matthew's School in St. John's.



Students in Ms. Hookey's class at Catalina Elementary proudly display the beehive they decorated.

FROM THE FRONT DESK

Canadian beverage outlook is improving

