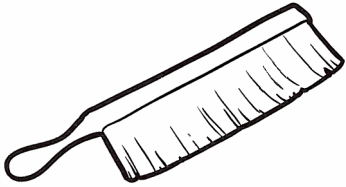
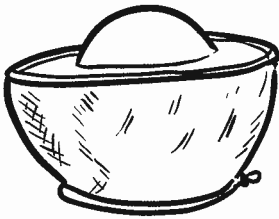


# Beekeeping Tools

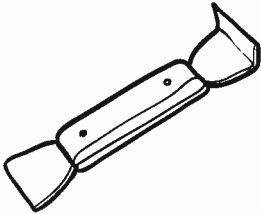
What are these tools used for? Link each tool to the correct description.



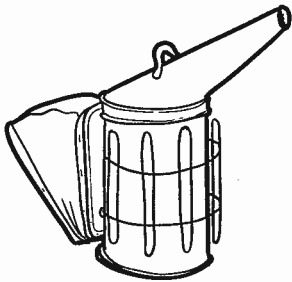
The smoke in the **smoker** calms the bees.



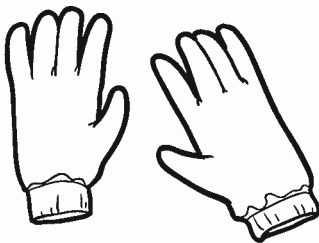
The **hive tool** is used to pry open the hive and separate the frames.



The beekeeper's **gloves** protect hands from bee stings.



The **bee brush** is used to gently sweep the bees from the combs.



The beekeeper's **hat and veil** prevent the bees from flying into the beekeeper's face and hair.